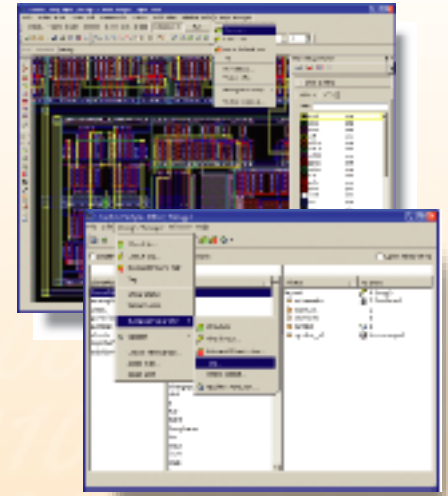


SOS viaCustomDesigner – DM for Synopsys' Custom Designer

SOS viaCustomDesigner provides unparalleled design data management and multi-site team collaboration support for Synopsys' Galaxy Custom Designer. The SOS Design Collaboration platform is seamlessly integrated with Custom Designer, streamlining the development of complex ICs with large teams across geographically dispersed sites.

SOS viaCustomDesigner empowers project teams with new levels of data collaboration by providing access to SOS data management and collaboration features directly from the Custom Designer environment. SOS DM features can be readily invoked from the Library Manager and design editors. Designers can work with logical design units such as cells and views in Open Access libraries without thinking about the co-managed set of physical files that make up these logical design units.

SOS viaCustomDesigner is 'design-aware' and supports DM operations for an entire design hierarchy or for a category of cells. For instance, all the cell views in a design hierarchy or category can be selected and checked-in or tagged in a single operation. Support for Custom Designers data management API ensures seamless integration with the entire design flow. SOS DM commands are available directly in the Custom Designer user interface. Cell views are also checked-out and checked-in automatically to simplify the data management experience.



ClioSoft DM in Synopsys' Custom Designer



Features	Benefits
Built on SOS Design Collaboration Platform	Efficient multi-site collaboration. Manage all project data from concept through tapeout in one integrated system.
Manage Open Access Libraries, Cells, Views	Work at the abstraction levels of libraries, cells, and views and let SOS viaCustomDesigner deal with the co-managed set of physical files that make up these design objects.
Cell View as Composite Object	Multiple physical files that make up a logical cell view are maintained as a single composite object in SOS, ensuring that DM operations on the design unit are atomic and efficient.
DM from the Custom Designer Library Manager	Work within the familiar Custom Designer environment and access DM commands conveniently from the Library Manager.
DM from any Custom Designer Editor	Access DM commands from the Design Manager menu conveniently embedded into the schematic, symbol, and layout editors.
Auto Check-out/Check-in	Integration with Custom Designer's DM API facilitates 'just-in-time' check-out and check-in. Cell views are automatically checked out when opened for edit making DM operations a seamless part of the workflow.
DM for Design Hierarchy	Easily perform DM operations on a design hierarchy. For example, hierarchically check-out or tag all the layout views of a higher level cell.
DM by Category	Easily perform DM operations for a category of cell views. Makes large libraries more manageable.
Links to Smart Cache	Workareas with symbolic links to smart cache minimize disk space without compromising workarea control. Ideal for projects with large teams and big libraries.

"ClioSoft and Synopsys' commitment to open systems made the integration of SOS a natural, productive extension to Custom Designer."

Les Spruiell, Senior Product Marketing Manager, Custom Design, Synopsys, Inc.